

SyncQuick Backup V.4.0 User's Manual

- **System requirement:** Windows 98SE, Windows ME, Windows 2000 SP3 or above, Windows XP, Windows Vista.
- **Software requirement:** Microsoft .NET Framework 1.1, Internet Explorer 5.01 or later.

Overview of the Application:

SyncQuick Backup Ver.4.0 is a smart files copy and synchronization software under Windows platform, it is fully compatible with Windows 98SE/ME/2000/NT/XP/2003/Vista. SyncQuick Backup V.4.0 consists of 3 major features.

1. Backup scheduling

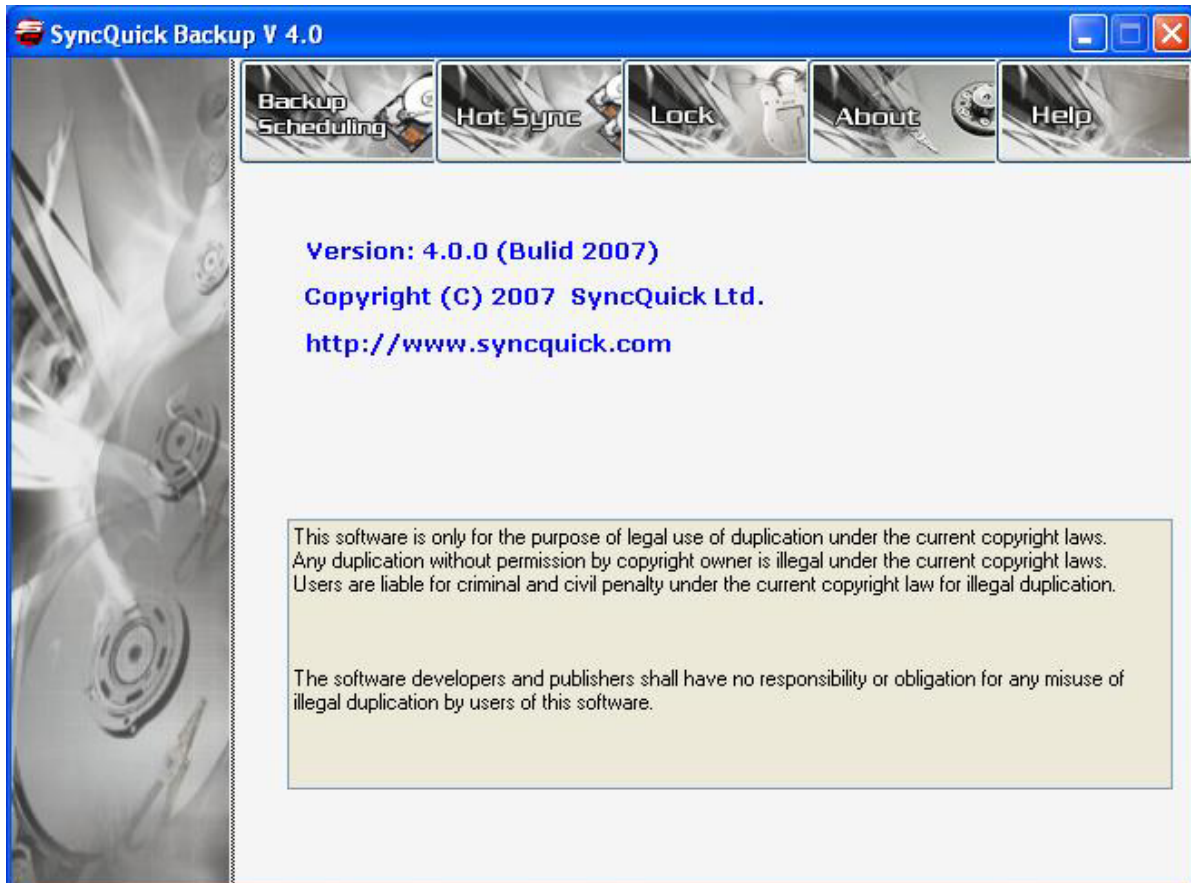
The unique scheduling backup allows you do your files backup at certain date/time and at a certain interval time.

2. Hot Sync

The Hot Sync function is designed to save your time for backup. Instead of backing up every singles files, it compares and backup only the newer files during the backup process. You can select either "Bi-lateral" Hot Sync which copy newer files both to source and destination drives, while "Uni-lateral" Hot Sync only backup newer files from source to destination drive.

3. Lock

You are able use SyncQuick disk lock function to ensure that no one access to your drive. In case you lost your hard drive, your previous data is not revealing to others. Note that SyncQuick disk lock function is not applicable on system drive to prevent the system drive being locked accidentally.

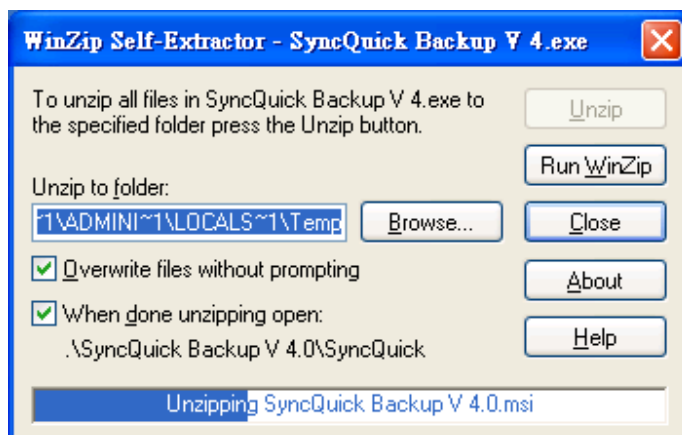
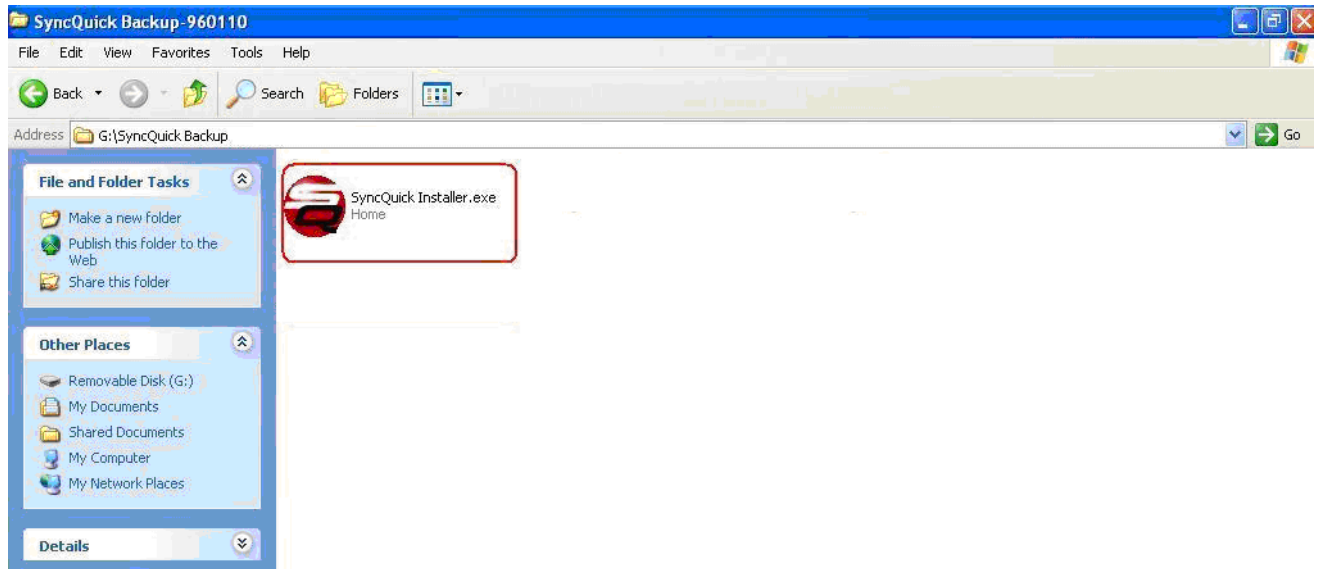


Installation

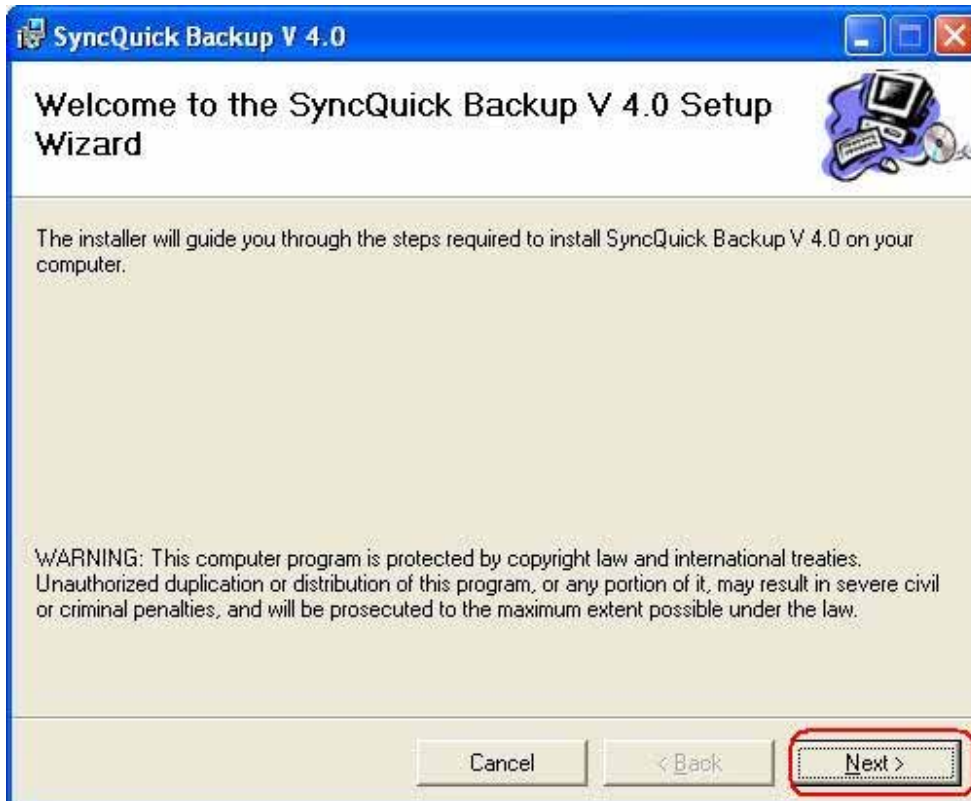
Please follow following steps to install SyncQuick Backup V.4.0 software.

1. Click on “**SyncQuick Installer.exe**” icon to execute the installation which will detect your system and install accordingly.

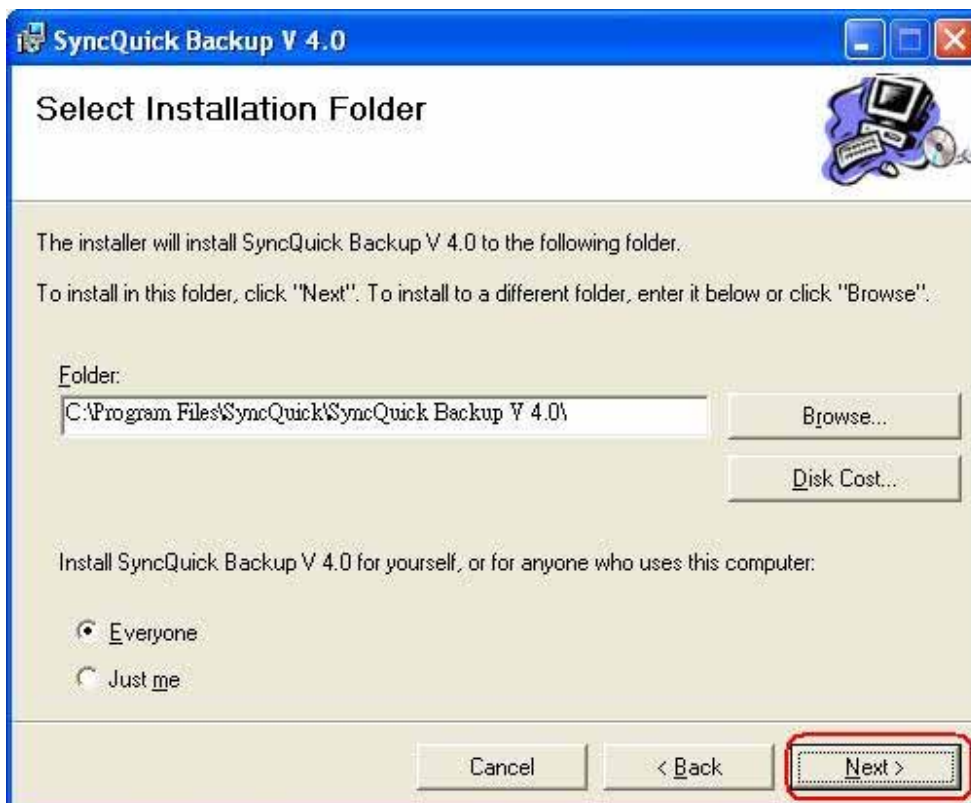
NOTE: You must have Windows IE 5.01 or higher version to install the software. If not, please upgrade your Windows IE.

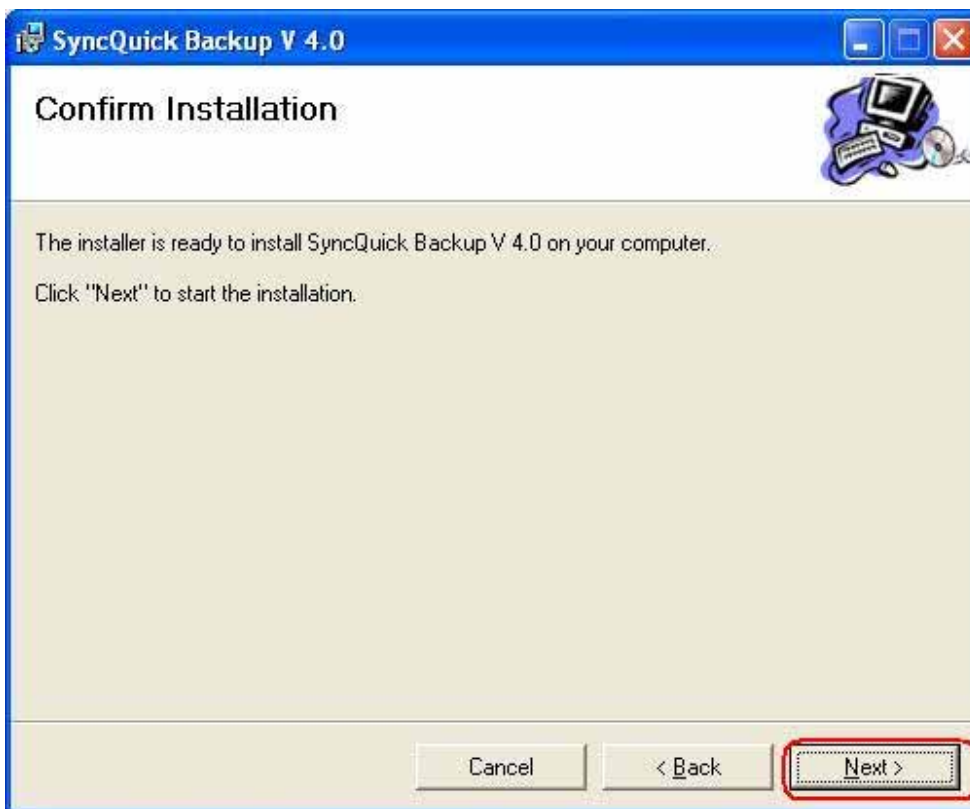


2. Click on "**Next**" to continue the installation.



3. Click on "Browse" to change the installation directory or click on "**Next**" to continue.

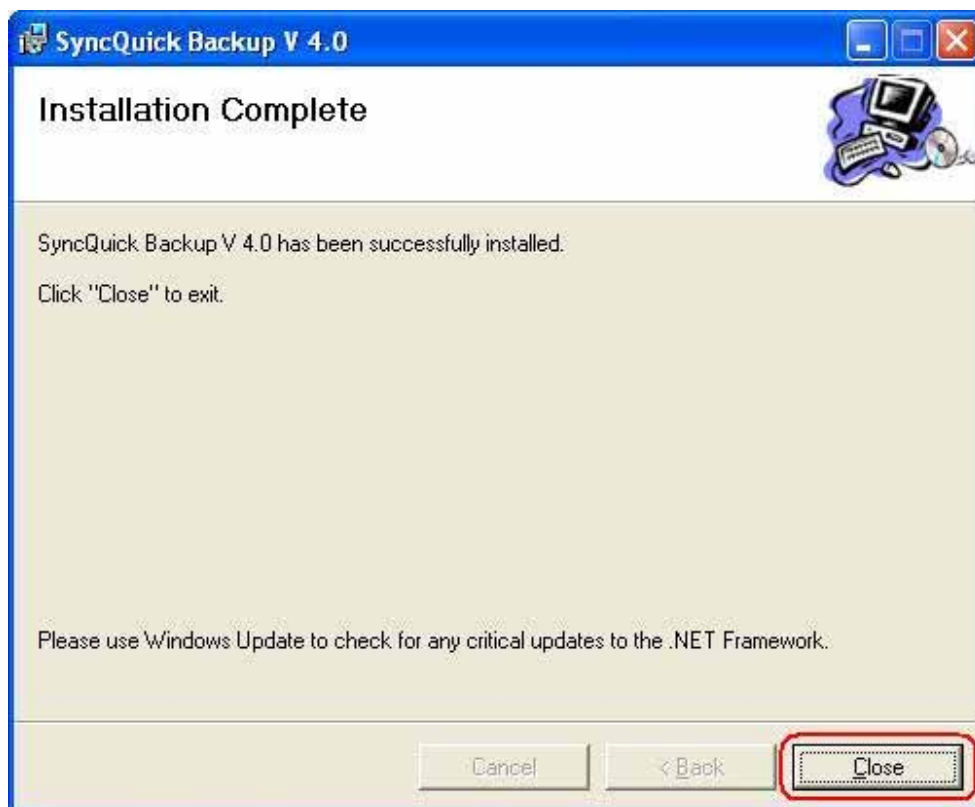




4. SyncQuick Backup V.4.0 supports 5 different languages (English, French, Spanish, German and Japanese). Please select the language you wish to install and click on "Ok".



5. Click on "Close" to complete the installation.



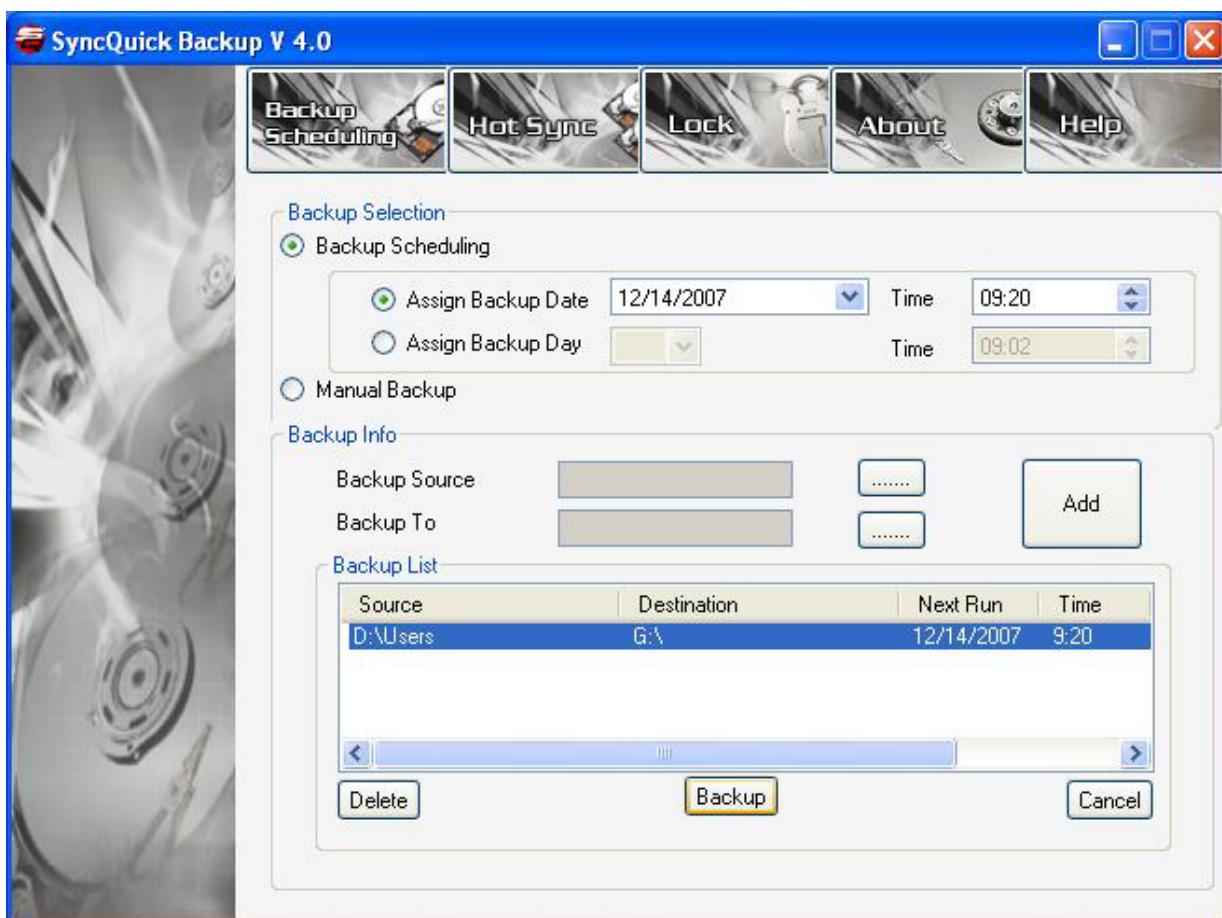
Operational manual

Backup Scheduling

You can schedule the backup copy to be performed daily, weekly, monthly, or at any time desired. SyncQuick Ver.4.0 can even perform the selective data source to destination copy.

To create a new backup job, you must first run SyncQuick Backup Ver.4.0, then.

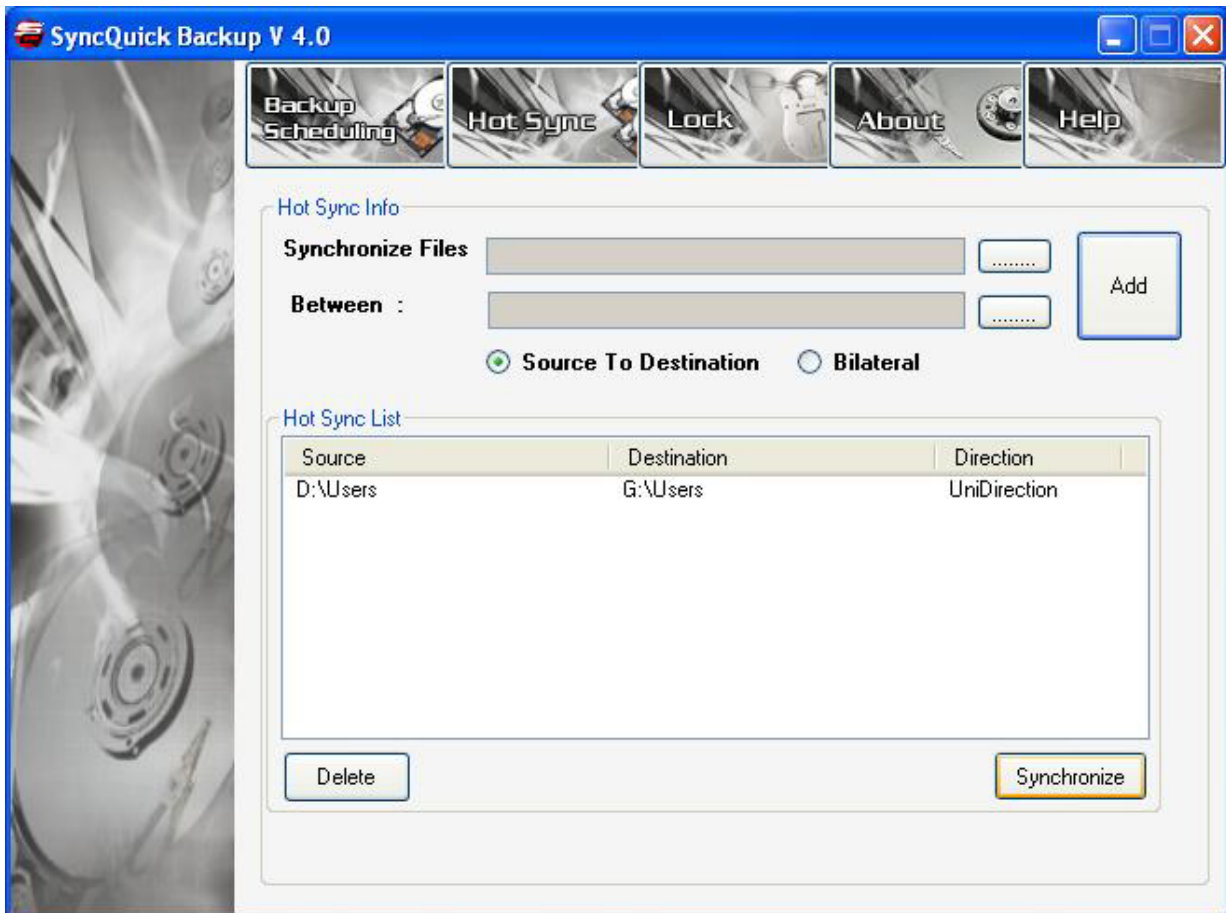
1. Choose Backup Scheduling | Back up selection: This creates a new back up time schedule job.
2. Choose Backup info to select the backup source and destination. Once it is done, you should select either Backup Date/Time or Day/Time for Automatic Backup. Or you can simply Select Backup Info and select Manual BackUp Option. After that Click on Add, you should ADD a new backup job that tells SyncQuick Backup Ver.4.0 what files from what folder it should copy..
3. Check the Backup list a little window shows your new backup jobs. You can use the same routine to add more Backup jobs and all they will be listed on the windows.
4. After everything is done, click on Back up for instant Manual Backup. Or if you have assigned certain date/time (or day/time) for Scheduled Backup job, the job will be performed automatically according to the time set.
5. For Deleting Jobs In Backup list---- Simply select any Job which you want to remove from backup list and click on delete the job will be removed from the list..



Hot Sync

This is a time-effective data management solution that provides you with flexible and reliable file synchronization. Whether you need to synchronize files bilaterally or unilaterally between Backup Source and Backup Destination, SyncQuick backup Ver.4.0 will help you get the task done.

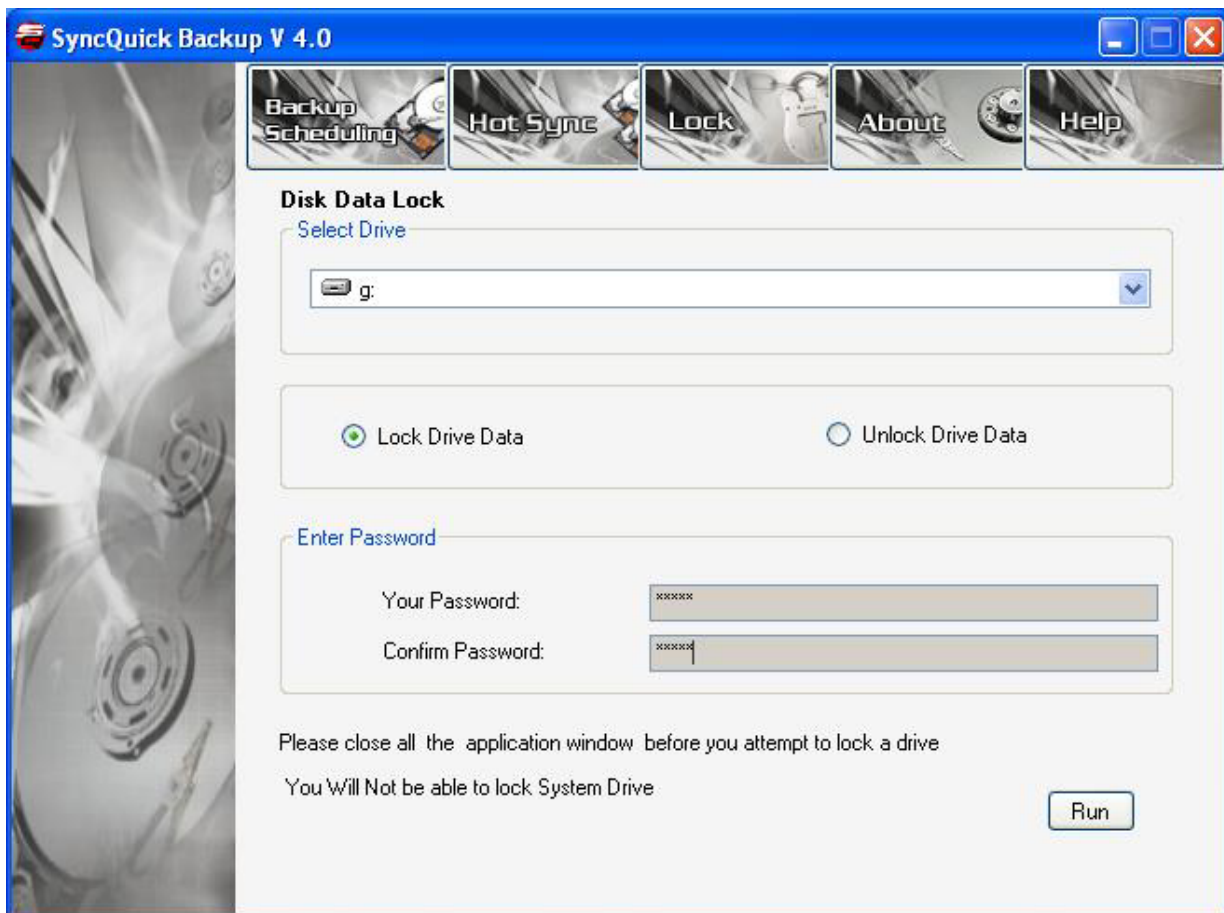
1. Choose Hot Sync to create a new Synchronize job.
2. Choose Sync up info to select the Synchronize source and destination. Once it is done, you should ADD a new Synchronization job that tells SyncQuick Ver.4.0 what files from what folder it should Sync.
3. Choose Hot Sync Directions: Specify the Host Sync job to be preceded from Source to Destination uni-laterally or Source to/From Destination bi-laterally.
4. Check the Sync list a little window shows your new Synchronize job. You can use the same routine to add more Synchronization jobs and all of them will be listed up on the windows.
5. After everything is done, you need click on "Synchronize" button to execute the jobs you have added. Please note that scheduling is not available for Hot Sync job.



Lock

This function enables you to lock your hard drives and to prevent your important data from exposing when the hard drives are lost.

1. Choose Lock to create a locking job.
2. Click on "Disk Data Lock" and select the hard disk drive you wish to lock. Select "Lock Drive Data" and click "Run" to execute it. (Please note that you will not be able to lock a hard drive with operation system on it. This is to prevent bootable hard drive to be locked accidentally.).
3. Input password and reconfirm password again (you should input at least 2 digits/character and maximum up to 10 digits/character for the password)
4. Click "Lock" button to start locking Hard Drive Disk.
5. To unlock Disk lock simply chooses "Unlock Drive" and then input the password which used for Disk data Lock and click Unlock button.



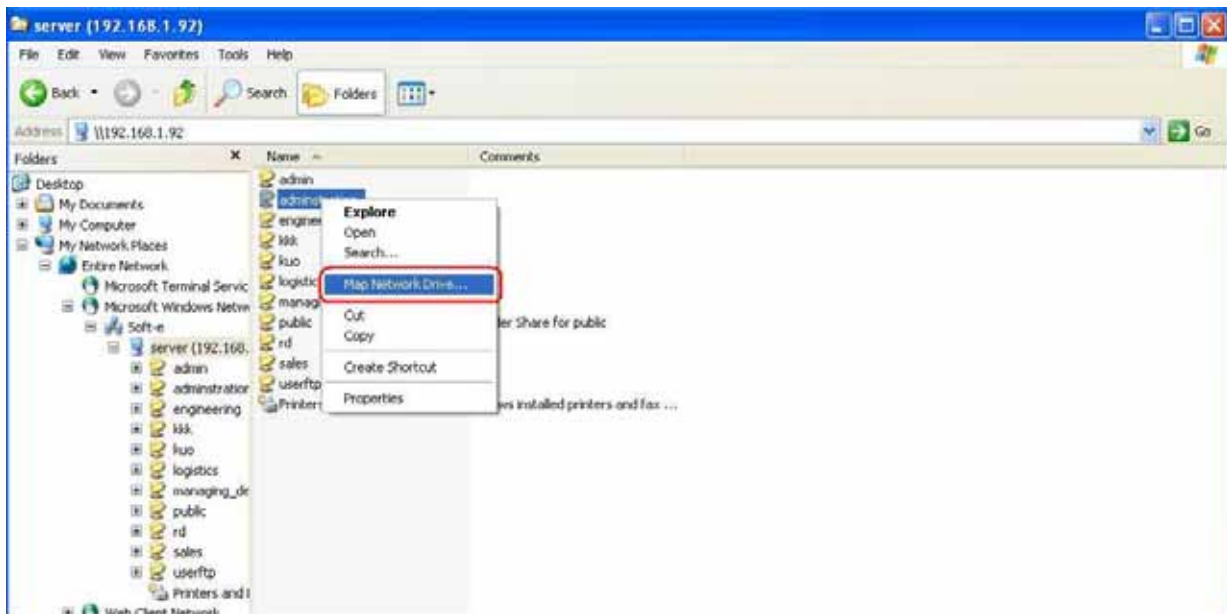
Caution:

It's very important for you to memorize the password that you use to lock your hard drives. In case you forgot or lost the input password, you will not be able to unlock the drive any more and will lose your data on the hard drive for good.

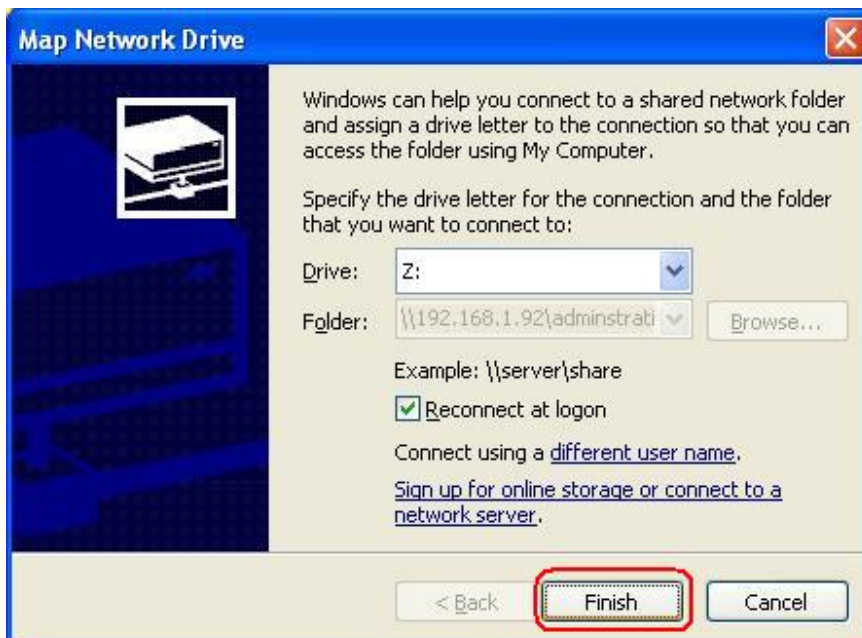
Using SyncQuick Backup on a network storage device

You can also use the Syncquick Backup software to backup data to your network storage device by mapping it as Network Drive.

To map the network drive, you can choose a folder and right-click mouse or from "Tools" option on tool bar and select "Map Network Drive". From the picture below, "administration" folder has been selected as Network Drive.



Click on "Finish" to complete Network Drive setting.



After the Network Drive is successfully connected, you can find the folder ("administration") on Network Drive and now you are able to backup data to this folder with SyncQuick Backup software. To disconnect it, simply right-click your mouse or click "Tools" on tool bar and select "disconnect" for Network Drive disconnection.

